



Keep your secrets safe!

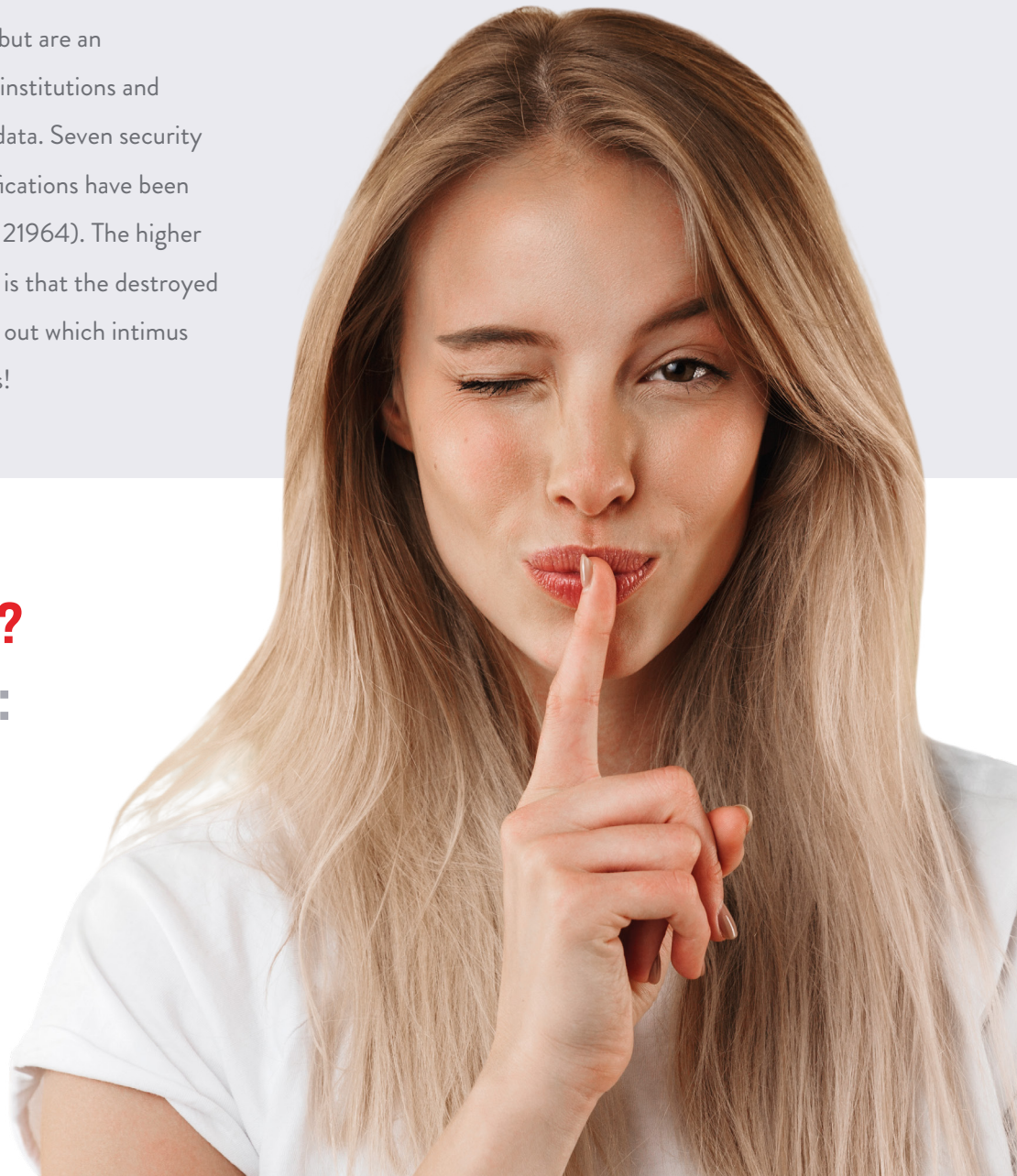
PARTICLE SIZES ACCORDING TO DIN 66399

Shredders do not simply destroy, but are an indispensable tool for companies, institutions and private users to protect sensitive data. Seven security levels for different material classifications have been defined in DIN 66399 (ISO/IEC 21964). The higher the security level, the less likely it is that the destroyed media can be reconstructed. Find out which intimus shredder suits your security needs!

ANY QUESTIONS?

GET IN CONTACT:

sales.de@intimus.com
T. +49 (0)7544 60-0



The Shredder Company

www.intimus.com

1. → 2. → 3.

Define your protection class:

Choose your security level:

Select a medium you wish to destroy:



Class 1

Normal protection requirement for internal data.

Class 2

High protection requirement for confidential data.

Class 3

Very high protection requirements for particularly confidential and secret data.

Security level 1

Security rating: Very low
After destruction, the data can be reproduced without special devices but with special time expenditure.

Security level 2

Security rating: Low
After destruction, the data can only be reproduced with special devices and special effort.

Security level 3

Security rating: Medium
After destruction, the data can only be reproduced with considerable effort (people/special recovery devices/time).

Security level 4

Security rating: Medium
After destruction, the data can only be reproduced with exceptionally high effort (people/special recovery devices/time).

Security level 5

Security rating: High
After destruction, the data can only be reproduced with the use of non-commercial equipment or special constructions as well as forensic methods.

Security level 6

Security rating: Very high
After destruction, the data is impossible to reproduce according to the state of the art in technology.

Security level 7

Security rating: Extremely high
After destruction, the data is impossible to reproduce according to the state of the art in science and technology.

	P Paper Films Print forms 	O CDs/DVDs Blu-ray Discs 	T Floppy disks Magnetic cassettes ID cards with magnetic strips 	E USB sticks Chip cards SSDs Phones/Tablets Memory cards 	F Microfilms 	H HDDs with magnetic data 					
P-1	Particle size ≤2000 mm ² Strip width ≤12 mm Strip length not limited	O-1	Particle size ≤2000 mm ²	T-1	Mechanically inoperable	E-1	Mechanically/electronically inoperable	F-1	Particle size ≤160 mm ²	H-1	Mechanically/electronically inoperable
P-2	Particle size ≤800 mm ² Strip width ≤6 mm Strip length not limited	O-2	Particle size ≤800 mm ²	T-2	Cut into several pieces and particle size ≤2000 mm ²	E-2	Medium split	F-2	Particle size ≤30 mm ²	H-2	Medium damaged
P-3	Particle size ≤320 mm ² Strip width ≤2 mm Strip length not limited	O-3	Particle size ≤160 mm ²	T-3	Particle size ≤320 mm ²	E-3	Medium split and particle size ≤160 mm ²	F-3	Particle size ≤10 mm ²	H-3	Medium deformed
P-4	Particle size ≤160 mm ² And for regular particles: Strip width ≤6 mm	O-4	Particle size ≤30 mm ²	T-4	Particle size ≤160 mm ²	E-4	Data carrier (chip) split and particle size ≤30 mm ²	F-4	Particle size ≤2,5 mm ²	H-4	Medium split and deformed several times and particle size ≤2000 mm ²
P-5	Particle size ≤30 mm ² And for regular particles: Strip width ≤2 mm	O-5	Particle size ≤10 mm ²	T-5	Particle size ≤30 mm ²	E-5	Data carrier (chip) split several times and particle size ≤10 mm ²	F-5	Particle size ≤1 mm ²	H-5	Medium split and deformed several times and particle size ≤320 mm ²
P-6	Particle size ≤10 mm ² And for regular particles: Strip width ≤1 mm	O-6	Particle size/ash ≤5 mm ² or melt product	T-6	Particle size ≤10 mm ²	E-6	Data carrier (chip) split several times and particle size/ash ≤1 mm ²	F-6	Particle size/ash ≤0,5 mm ²	H-6	Medium split and deformed several times and particle size ≤10 mm ²
P-7	Particle size/melt/ash ≤5 mm ² And for regular particles: Strip width ≤1 mm	O-7	Particle size/ash ≤0,2 mm ² or melt product	T-7	Particle size/ash ≤2,5 mm ² or melt product	E-7	Data carrier (chip) split several times and particle size/ash ≤0,5 mm ²	F-7	Particle size/ash ≤0,2 mm ² or melt product	H-7	Medium split and deformed several times and particle size ≤5 mm ² or heating above curie temperature



P-2

Paper
10x70 mm

intimus 16.50



P-3

Paper
6x50 mm

intimus 16.86



P-4

Paper
3,8x30 mm

intimus 45 CP4
intimus 60 CP4





P-4

Paper
12 mm screen*

intimus DIS 260/410

* Hole diameter



P-5

Paper
1,9x15 mm

intimus 120 CP5



P-5

Paper
9 mm screen*

intimus DIS 300/450

* Hole diameter





P-6

Paper
0,8x12 mm

intimus 100 CP6



P-7

Paper
0,8x4,5 mm

intimus 175 hybrid
intimus 175 CP7



P-7

Paper
3,5 mm screen*

intimus DIS 300/600

* Hole diameter



Solutions for office:



Medium		P	O	T	E	F	H
Model	mm	Security Level***					
intimus 20 CP4	5x28	4	-	4 ²	3 ³	-	-
intimus Confidential CP5	2x8	5	1	2 ²	3 ³	2	-
intimus 34 CP7	1x5	7	-	-	-	-	-
intimus 1500							
SP2	4 ^{**}	2	-	2 ²	2 ³	-	-
CP4	4,3x33	4	3	4 ²	3 ³	1	-
CP5	2x12	5	-	5 ²	4 ³	2	-
intimus 2500							
SP2	4 ^{**}	2	1	2 ²	2 ³	-	-
CP4	4,3x33	4	3	4 ²	3 ³	1	-
CP5	2x12	5	-	5 ²	4 ³	2	-
intimus 3500							
SP2	4 ^{**}	2	1	2 ²	2 ³	-	-
CP4	4,3x28	4	3	4 ²	3 ³	1	-
CP5	2x10	5	-	5 ²	4 ³	2	-
intimus AutoShred 180 CP4	4x12	4	-	4 ²	3 ³	-	-
intimus 45, 60							
SP2	3,8 ^{**}	2	1	2 ¹	2 ³	-	-
CP4	3,8x30	4	1	2 ¹	2 ³	1	-
CP5	1,9x15	5	1	2 ¹	2 ³	2	-
CP7	0,8x4,5	7	-	-	-	3	-
intimus 85, 115 RX/OmniShred	3,6x43	4	3	4 ¹	3 ³	1	-
intimus 100							
SP2	3,8 ^{**}	2	2 ⁵	2 ² 5	2 ³ 5	-	-
CP4	3,8x36	4	3 ⁵	4 ² 5	3 ³ 5	1	-
CP5	1,9x15	5	-	5 ² 5	4 ³ 5	2	-
CP6	0,8x12	6	-	6 ² 5	5 ³ 5	3	-
CP7	0,8x4,5	7	-	-	-	3	-
intimus 120							
SP2	5,8 / 3,8	2	1	2 ¹	2 ³	-	-
CP4	3,8x36	4	1	2 ¹	2 ³	1	-
CP5	1,9x15	5	1	2 ¹	2 ³	2	-
CP6	0,8x12	6	-	6 ¹	5 ³	3	-
CP7	0,8x4,5	7	-	-	-	3	-

Medium		P	O	T	E	F	H
Model	mm	Security Level***					
intimus 130							
SP2	3,8 ^{**}	2	2 ⁵	2 ² 5	2 ³ 5	-	-
CP4	3,8x36	4	3 ⁵	4 ² 5	3 ³ 5	1	-
CP5	1,9x15	5	-	5 ² 5	4 ³ 5	2	-
intimus 175							
SP2	5,8 ^{**}	2	2 ⁵	2 ¹ 5	2 ³ 5	-	-
CP4	4x40	4	3 ⁵	4 ¹ 5	3 ³ 5	1	-
CP5	1,9x15	5	4 ⁵	5 ¹ 5	4 ³ 5	2	-
CP6	0,8x12	6	-	6 ² 5	5 ³ 5	3	-
CP7	0,8x4,5	7	-	-	-	3	-
intimus 175 hybrid	0,8x4,5 / 1,2x2 ^M	7	6	6 ²	5 ³	3	-
intimus 205							
SP2	5,8 ^{**}	2	2 ⁵	2 ¹ 5	2 ³ 5	-	-
CP4	4x40	4	3 ⁵	4 ¹ 5	3 ³ 5	1	-
CP5	1,9x15	5	4 ⁵	5 ¹ 5	4 ³ 5	2	-
CP6	0,8x12	6	-	6 ² 5	5 ³ 5	3	-
CP7	0,8x4,5	7	-	-	-	3	-
intimus H200 CP4 VS	3,8x40	4	3	4 ¹	3 ³	1	-
intimus 007 SE	0,8x12	6	-	6 ²	5 ³	3	-
intimus 007 SL	0,65x1,5-5	7	-	-	-	-	-
intimus 007 SF	0,8x4,5	7	-	-	-	3	-
intimus FlashEx	4x15	-	3	4 ⁴	3	-	-
intimus 360 Crusher	Deformed	-	-	-	-	-	3
intimus 360 Destroyer	Deformed	-	-	-	1	-	3
intimus 8000 S Degausser	Erased						
intimus 9000 S Degausser	Erased						
intimus 20000 S Degausser	Erased						
intimus 40000 S Degausser	Erased						

^M Cutting size media

^{**} Strip cut

^{***} Security level according to DIN 66399 (ISO/IEC 21964)

¹ Only floppy disks / ID cards.

² Only ID cards.

³ Only plastic cards with electronic chip.

⁴ Except from magnetic tape cassette with metal core.

⁵ No splash protection -

CD and plastic card destruction only with safety glasses.

Solutions for heavy duty/industrial:



Medium		P	O	T	E	F	H
Model	mm	Security Level***					
intimus H200 CP4	3,8x40	4	3	4 ¹	3 ³	1	-
intimus 200 CP5	1,9x15	5	4 ⁵	5 ¹⁵	4 ³⁵	2	-
intimus 14.95, 14.87							
	6x50	3	2	3 ¹	2 ³	-	-
	3,8x40	4	3	4 ¹	3 ³	1	-
intimus 16.50, 16.86, 16.99 SmartShred							
	10x70	2	2	2 ¹	2 ³	-	-
	6x50	3	2	3 ¹	2 ³	-	-
intimus VZ 14.00	2x15	5	4	5 ¹	4 ³	2	-
intimus XL/XLM 17.00	6x15-50	3	-	-	-	-	-
intimus XL/XLM 19.00, 20.00, 21.00	11,8x15-55	2	-	-	-	-	-
intimus Disintegrator 150/230, 200/410 ⁶							
	20*	3	2	3 ⁴	2 ³	-	-
	9*	4	3	4 ⁴	3 ³	1	-
	5*	5	4	5 ⁴	4 ³	2	-
	4*	6	5	6 ⁴	5 ³	3	-
	3*	7	6	7 ⁴	5 ³	4	-
	2,15*	7	6	7 ⁴	5 ³	4	-
intimus Disintegrator 260/410 ⁶							
	20*	3	2	3 ⁴	2 ³	-	-
	12*	4	3	4 ⁴	3 ³	1	-
	9*	5	4	5 ⁴	4 ³	2	-
	5*	6	5	6 ⁴	5 ³	3	-
	3*	7	6	7 ⁴	5 ³	4	-
	2,15*	7	6	7 ⁴	5 ³	4	-
intimus Disintegrator 300/450, 300/600 ⁶							
	20*	3	3	3 ⁴	2 ³	-	-
	12*	4	4	4 ⁴	3 ³	1	-
	9*	5	5	5 ⁴	4 ³	2	-
	5*	6	5	6 ⁴	5 ³	3	-
	3,5*	7	6	6 ⁴	5 ³	3	-

Medium		P	O	T	E	F	H
Model	mm	Security Level***					
intimus Disintegrator 600/1000 ⁶							
	20*	3	3	3 ⁴	2 ³	-	-
	12*	4	4	4 ⁴	3 ³	1	-
	9*	5	5	5 ⁴	4 ³	2	-
	5*	7	6	6 ⁴	5 ³	3	-
intimus HDD Gladiator	30 & 12**	-	2	2	2	-	3
intimus HDD Granulator ⁶							
	w/o screen	-	2	2	-	-	3
	14*	-	3	4	-	-	5
	12*	-	3	4	-	-	5
	10*	-	4	5	-	-	5
	8*	-	4	5	-	-	5
intimus SSD Granulator ⁶							
	w/o screen	-	-	4	3	-	-
	5*	-	-	5	4	-	-
	3,5*	-	-	6	5	-	-
intimus SSD-HDD Granulator ⁶							
SSD	w/o screen	-	-	4	3	-	-
SSD	5*	-	-	5	4	-	-
SSD	3,5*	-	-	6	5	-	-
HDD	w/o screen	-	2	-	-	-	3
HDD	14*	-	3	-	-	-	5
HDD	12*	-	3	-	-	-	5
HDD	8*	-	4	-	-	-	5
intimus VZ Multimedia 180	19**	-	1	1	2	-	4
intimus VZ Spezial							
S 28/35	20**	-	-	1	2	-	-
M 35/35	20**	-	-	1	2	-	-
L 38/50	30**	-	-	1	2	-	-

* Hole diameter

** Strip cut

*** Security level according to DIN 66399 (ISO/IEC 21964)

1 Only floppy disks / ID cards.

3 Only plastic cards with electronic chip.

4 Except from magnetic tape cassette with metal core.

5 No splash protection – CD and plastic card destruction only with safety glasses.

6 More screens available on request.



Security Level***	Medium	Up to 3 persons: Home/Small Office	Up to 5 persons: Office	Up to 10 persons: Large Office	Up to 25 persons: Department	Industrial:
1	P					
	O	2500 SP2 Confidential CP5	3500 SP2 45 SP2/CP4/CP5	60 SP2/CP4/CP5 120 SP2/CP4/CP5		VZ MM180
	T					VZ Special (S/WW) VZ MM180
	E	360 Destroyer				
2	F	1500 CP4 2500 CP4	45 CP4 3500 CP4	60 CP4 85 RX/OmniShred 100 CP4 120 CP4	115 RX/OmniShred 130 CP4 175 CP4 205 CP4 H200 CP4 VS	H200 CP4 14.95/14.87 (3,8x40 mm) DIS 150/230, 200/410 (9 mm) DIS 260/410, 300/450, 300/600, 600/1000 (12 mm)
	P	1500 SP2 2500 SP2	3500 SP2 45 SP2	60 SP2 100 SP2 120 SP2	130 SP2 175 SP2 205 SP2	16.50/16.86/16.99 (10x70 mm) XL/XLM 19.00/20.00/21.00
	O			100 SP2 ²	130 SP2 ⁵ 175 SP2 ⁵ 205 SP2 ⁵	14.95/14.87 (6x50 mm) 16.50/16.86/16.99 (10x70/6x50 mm) DIS 150/230, 200/410, 260/410 (20 mm) HDD Gladiator HDD Granulator / SSD-HDD Granulator (w/o screen)
	T	1500 SP2 ² 2500 SP2 ² Confidential CP5 ²	3500 SP2 ² 45 SP2/CP4/CP5 ¹	60 SP2/CP4/CP5 ¹ 100 SP2 ^{2/5} 120 SP2/CP4/CP5 ¹	130 SP2 ^{2/5} 175 SP2 ^{1/5} 205 SP2 ^{1/5}	HDD Granulator (w/o screen)
3	E	1500 SP2 ³ 2500 SP2 ³	3500 SP2 ³ 45 SP2/CP4 ³ /CP5 ³	60 SP2 ³ /CP4 ³ /CP5 ³ 100 SP2 ^{3/5} 120 SP2 ³ /CP4 ³ /CP5 ³	130 SP2 ^{3/5} 175 SP2 ^{3/5} 205 SP2 ^{3/5}	14.95/14.87 (6x50 mm) ³ 16.50/16.86/16.99 (10x70/6x50 mm) ³ DIS 150/230, 200/410, 260/410, 300/450, 600/1000 (20 mm) ³ HDD Gladiator VZ MM180 VZ Special (S/WW)
	F	Confidential CP5 1500 CP5 2500 CP5	3500 CP5 45 CP5	60 CP5 100 CP5 120 CP5	130 CP5 175 CP5 205 CP5	200 CP5 VZ 14.00 DIS 150/230, 200/410 (5 mm) DIS 260/410, 300/450, 300/600, 600/1000 (9 mm)
	P					14.95/14.87 (6x50 mm) 16.50/16.86/16.99 (6x50 mm) XL/XLM 17.00 DIS 150/230, 200/410, 260/410, 300/450, 300/600, 600/1000 (20 mm)
	O	1500 CP4 2500 CP4	3500 CP4	85 RX/OmniShred 100 CP4 ⁵	130 CP4 ⁵ 115 RX/OmniShred 175 CP4 ⁵ 205 CP4 ⁵ H200 CP4 VS FlashEx	H200 CP4 14.95/14.87 (3,8x40 mm) DIS 150/230, 200/410 (9 mm) DIS 260/410 (12 mm) DIS 300/450, 300/600, 600/1000 (20 mm) HDD Granulator (14 mm) HDD Granulator (w/o screen) SSD-HDD Granulator (14/12 mm)
4	T					14.95/14.87/16.50/16.86/16.99 (6x50 mm) ³ DIS 150/230, 200/410, 260/410, 300/450, 300/600, 600/1000 (20 mm) ³
	E	20 CP4 ³ Confidential CP5 ³ 1500 CP4 ³ 2500 CP4 ³	3500 CP4 ³ AutoShred 180 CP4 ³	85 RX/OmniShred ³ 100 CP4 ^{3/5}	115 RX/OmniShred ³ 130 CP4 ^{3/5} 175 CP4 ^{3/5} 205 CP4 ^{3/5} H200 CP4 VS ³ FlashEx	H200 CP4 ³ 14.95/14.87 (3,8x40 mm) ³ DIS 150/230, 200/410 (9 mm) ³ DIS 260/410, 300/450, 300/600, 600/1000 (12 mm) ³ SSD Granulator / SSD-HDD Granulator (w/o screen)
	F		45 CP7	60 CP7 100 CP6/CP7 120 CP6/CP7	175 CP6/CP7 175 hybrid 205 CP6/CP7 007 SE/SF	DIS 150/230, 200/410 (4 mm) DIS 260/410, 300/450, 300/600 (5/3,5 mm) DIS 600/1000 (7/5 mm)
	H	360 Crusher/360 Destroyer				HDD Gladiator HDD Granulator / SSD-HDD Granulator (w/o screen)
5	P	20 CP4 1500 CP4 2500 CP4	3500 CP4 45 CP4 AutoShred 180 CP4	60 CP4 85 RX/OmniShred 100 CP4 120 CP4	115 RX/OmniShred 130 CP4 175 CP4 205 CP4 H200 CP4 VS	H200 CP4 14.95/14.87 (3,8x40 mm) DIS 150/230, 200/410 (9 mm) DIS 260/410, 300/450, 300/600, 600/1000 (12 mm)
	O				175 CP5 ⁵ 205 CP5 ⁵	200 CP5 ⁵ VZ 14.00 DIS 150/230, 200/410 (5 mm) DIS 260/410 (9 mm) DIS 300/450, 300/600, 600/1000 (12 mm) HDD Granulator (12/10/8 mm) SSD-HDD Granulator (8 mm)
	T	20 CP4 ² 1500 CP4 ² 2500 CP4 ²	3500 CP4 ² AutoShred 180 CP4 ²	85 RX/OmniShred ¹ 100 CP4 ^{2/5}	115 RX/OmniShred ¹ 130 CP4 ^{2/5} 175 CP4 ^{1/5} 205 CP4 ^{1/5} H200 CP4 VS ¹ FlashEx ⁴	H200 CP4 ¹ 14.95/14.87 (3,8x40 mm) ³ DIS 150/230, 200/410 (9 mm) ³ DIS 260/410, 300/450, 300/600, 600/1000 (12 mm) ³ HDD Granulator (14/12 mm) SSD Granulator (w/o screen) SSD-HDD Granulator (w/o screen)
	E	1500 CP5 ³ 2500 CP5 ³	3500 CP5 ³	100 CP5 ^{3/5}	130 CP5 ^{3/5} 175 CP5 ^{3/5} 205 CP5 ^{3/5}	200 CP5 ^{3/5} VZ 14.00 ³ DIS 150/230, 200/410 (5 mm) ³ DIS 260/410, 300/450, 300/600, 600/1000 (9 mm) ³ SSD Granulator/SSD-HDD Granulator (5 mm)
6	F					DIS 150/230, 200/410, 260/410 (3/2,15 mm)
	H					VZ MM180
	P	1500 CP5 2500 CP5 Confidential CP5	3500 CP5 45 CP5	60 CP5 100 CP5 120 CP5	130 CP5 175 CP5 205 CP5	200 CP5 VZ 14.00 DIS 150/230, 200/410 (5 mm) DIS 260/410, 300/450, 300/600, 600/1000 (9 mm)
	O					DIS 150/230, 200/410 (4 mm) DIS 260/410 (5 mm) DIS 300/450, 300/600 (9/5 mm) DIS 600/1000 (7/9 mm)
7	T	1500 CP5 ² 2500 CP5 ²	3500 CP5 ²	100 CP5 ^{2/5}	130 CP5 ^{2/5} 175 CP5 ^{1/5} 205 CP5 ^{1/5}	200 CP5 ^{1/5} VZ 14.00 DIS 150/230, 200/410 (5 mm) ² DIS 260/410, 300/450, 300/600, 600/1000 (9 mm) ² HDD Granulator (10/8 mm) SSD Granulator/SSD-HDD Granulator (5 mm)
	E			100 CP6 ^{3/5} 120 CP6 ³	175 CP6 ^{3/5} 175 hybrid ³ 205 CP6 ^{3/5} 007 SE ³	DIS 150/230, 200/410 (4 mm) ³ DIS 150/230, 200/410 (3/2,15 mm) ³ DIS 260/410 (5/3/2,15 mm) ³ DIS 300/450, 300/600 (5/3,5 mm) ³ DIS 600/1000 (7/5 mm) ³ SSD Granulator/SSD-HDD Granulator (3,5 mm)
	H					HDD Granulator (14/12/10/8 mm) SSD-HDD Granulator (14/12/8 mm)
	P			100 CP6 120 CP6	175 CP6 205 CP6 007 SE	DIS 150/230, 200/410 (4 mm) DIS 260/410, 300/450, 300/600 (5 mm) DIS 600/1000 (7 mm)
6	O				175 hybrid	DIS 150/230, 200/410, 60/410 (3/2,15 mm) DIS 300/450, 300/600 (3,5 mm) DIS 600/1000 (5 mm)
	T			100 CP6 ^{2/5} 120 CP6 ¹	175 CP6 ^{2/5} 175 hybrid ¹ 205 CP6 ^{2/5} 007 SE ²	DIS 150/230, 200/410 (4 mm) DIS 260/410, 300/450, 300/600, 600/1000 (5 mm) ² DIS 300/450, 300/600 (3,5 mm) ² DIS 600/1000 (7 mm) ² SSD Granulator/SSD-HDD Granulator (3,5 mm)
	P		45 CP7 34 P7	60 CP7 100 CP7 120 CP7	175 CP7 175 hybrid 205 CP7 007 SL/SF	DIS 150/230, 200/410, 260/410 (3/2,15 mm) DIS 300/450, 300/600 (3,5 mm) DIS 600/1000 (5 mm)
7	T					DIS 150/230, 200/410, 260/410 (3/2,15 mm) ⁴

*** Security level according to DIN 66399 (ISO/IEC 21964)

- 1 Only floppy disks / ID cards.
- 2 Only ID cards.
- 3 Only plastic cards with electronic chip.

- 4 Except from magnetic tape cassette with metal core.
- 5 No splash protection -
- CD and plastic card destruction only with safety glasses.